



ZIMMER+ROHDE

[atɛ'ljɛ] | AUTUMN 2021

Atelier | 10901

¥56,300/m
Width:140cm
74%CO 13%PAN 10%PES 3%PA
3 Colourways



Opening | 10902

¥31,500/m
Width:140cm Usable width:135cm
62%CO 38%LI
4 Colourways



Stage | 10905

¥31,500/m
Width:300cm
51%PAN 49%PES
4 Colourways



Vivid RE FR | 10909

¥22,500/m
Width:300cm
80%PES FR(60% recycled) 20%PES CS
12 Colourways



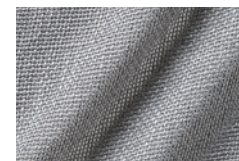
Venue | 10903

¥27,000/m
Width:300cm
60%PES 15%LI 12%CLY 9%CO 4%CV
4 Colourways



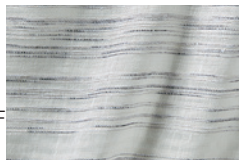
Novel RE FR | 10910

¥27,000/m
Width:300cm
100%PES FR(50% recycled)
15 Colourways



Study | 10906

¥27,000/m
Width:320cm
65%LI 17%CO 12%PA 5%PES 1%MTF
6 Colourways



Aero New FR | 10908

¥20,300/m
Width:330cm
77%PES CS 23%PES
20 Colourways



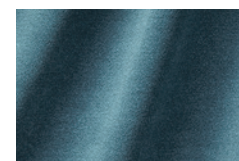
Fame | 10907

¥31,500/m
Width:320cm
76%HA 24%CO
6 Colourways



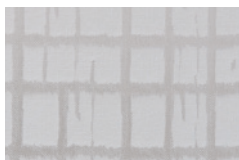
Penthouse FR | 10911

¥26,900/m
Width:300cm
100%PES FR
Martindale:50,000
40 Colourways / 吸音



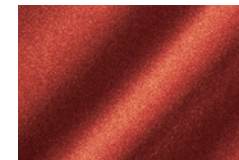
Setup | 10904

¥27,000/m
Width:298cm
40%PES 34%LI 14%CV 12%CO
3 Colourways



Infinity Plus | 10660

¥36,900/m
Width:140cm
Ground:100%PES Pile:100%PAN
Martindale:100,000
80 Colourways



Composition List

CLY = Lyocell
CO = Cotton
CV = Viscose

HA = True hemp
LI = Flax(Linen)
MTF = Metal

PA = Polyamide
PAN = Acrylic
PES = Polyester

PES CS = Polyester Trevira CS
PES FR = Polyester Fire Resistant

ardecora

Milano

VILLA FARNESINA | 2021 / 2022

Pantheon I 15485

¥43,900/m
Width:150cm Usable width:145cm
100%CO
Martindale:20,000
5 Colourways



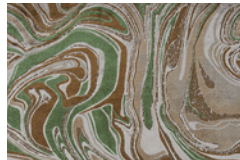
Dipinto I 15484

¥46,300/m
Width:140cm Usable width:130cm
100%ST Embroidery:100%CV
6 Colourways



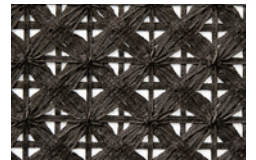
Carrara I 15486

¥56,100/m
Width:145cm
Ground:100%PES Pile:100%PES
Martindale:30,000
4 Colourways



Stucco | 15483

¥43,900/m
Width:150cm
100%PES
4 Colourways



Urbino I 15478

¥36,400/m
Width:140cm
47%CV 30%CO 23PES
4 Colourways



Bellini I 15477

¥43,900/m
Width:140cm
39%CO 26%LI 25%PES 10%CV
5 Colourways



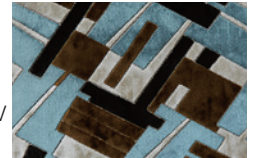
Affresco I 15480

¥43,900/m
Width:140cm
60%LI 28%PES 12%CV
5 Colourways



Terrazzo I 15479

¥61,000/m
Width:140cm
Ground:100%PES Pile: 60%PAN 40%CV
Martindale:50,000
3 Colourways



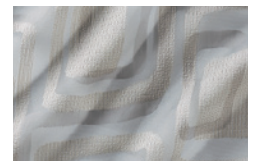
Palazzo Ducale I 15481

¥46,300/m
Width:140cm
100%CO Embroidery: 90%CV 10%PES
6 Colourways



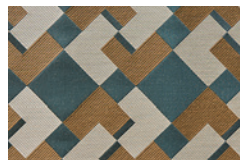
Bramante I 15482

¥34,100/m
Width:300cm ↓
56%PES 42%CO 1%PA 1%MTF
5 Colourways



Vasari I 15476

¥38,200/m
Width:140cm
69%CO 31%PA
Martindale:25,000
7 Colourways



Composition List

CO = Cotton
CV = Viscose
MTF = Metal

LI = Flax(Linen)
PA = Polyamide
PAN = Acrylic

PES = Polyester
ST = Tussah silk

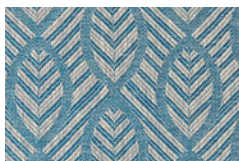
HODSOLL MCKENZIE

LONDON

UTOPIA | 2021 / 2022

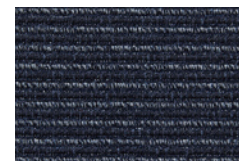
Floreana I 21271

¥29,300/m
Width:140cm
100%LI
6 Colourways



Burdwood RE I 21275

¥56,400/m
Width:145cm
45%WO 35%WS(recycled)
15%CV 5%CO
Martindale:20,000 / 5 Colourways



Antilia I 21280

¥33,800/m
Width:125cm
100%LI
4 Colourways



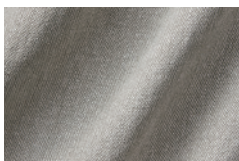
Eden I 21279

29,300/m
Width:145cm Usable width:138cm
90%CO 10%LI
3 Colourways



Terra Nova I 21272

¥45,100/m
Width:140cm
100%HA
Martindale:50,000
10 Colourways



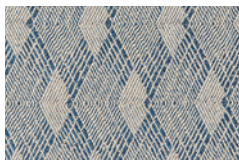
Rosevear I 21278

¥33,800/m
Width:150cm
75%LI 25%CO
5 Colourways



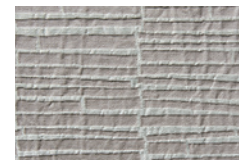
Tikopia I 21274

¥33,800/m
Width:145cm
36%HA 36%CLF 24%CO 4%PES
Martindale:22,000
6 Colourways



Bensalem I 21273

¥27,100/m
Width:150cm
56%LI 44%CO
5 Colourways



Bouvet RE I 21276

¥29,200/m
Width:290cm
50%WV 50%PES (recycled)
8 Colourways



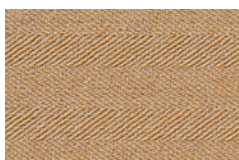
Superb Bird I 21282

¥35,900/m
Width:140cm
100%LI Embroidery:100%CV
3 Colourways



Howland RE I 21281

¥31,500/m
Width:270cm
52%CO(recycled) 34%LI
10%PES(recycled) 4%AF
9 Colourways



Superb Bird Flown I 21277

¥22,500/m
Width:140cm
100%LI
3 Colourways



Composition List

AF = Other fibres
CO = Cotton
CLF = Polychloride

CV = Viscose
HA = True hemp
LI = Flax (Linen)

PES = Polyester
WO = Wool
WS = Cashmere

WV = Fleece wool