

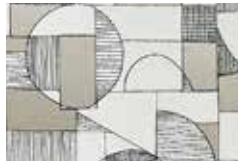


ZIMMER+ROHDE

MODERN GRAPHICS | AUTUMN 2020

Silhouette | 10867

¥33,300/m
4 Colourways
73%CV 27%PES
Width: 137cm
Martindale: 35,000



Nelson | 10873

¥25,400/m
14 Colourways
80%CO 20%CV
Width: 142cm
Martindale: 100,000



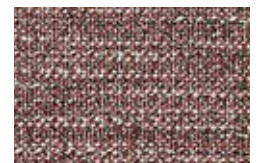
Tangle | 10874

¥45,000/m
3 Colourways
100%LI Embroidery:100%CO
Width:152cm Usable width:132cm



Oxford | 10877

¥28,900/m
20 Colourways
41%CO 30%PAN 21%PES 8%WO
Width: 143cm
Martindale: 55,000



Strokes | 10875

¥28,300/m
4 Colourways
79%PES 21%CV
Width: 305cm ↓



RE-Mix | 10868

¥26,000/m
17 Colourways
52%PES 45%CO 3%AF
Width: 275cm
Martindale: 80,000



Wind Gust | 10876

¥26,600/m
4 Colourways
100%PES
Width: 305cm



Twine FR | 10880

¥21,900/m
13 Colourways
100%PES CS
Width: 315cm ↓



Zuma | 10866

¥30,300/m
5 Colourways
48%CO 36%LI 16%PES
Width: 155cm



Pulse | 10878

¥20,000/m
15 Colourways
45%PES 37%CO 9%LI 9%CV
Width: 310cm ↓



Composition List

CO	= Cotton	PP	= Polypropylene
CV	= Viscose	PU	= Polyurethane
LI	= Flax (Linen)	PVC	= Polyvinylchloride
PAN	= Acrylic	WO	= Wool
PA	= Polyamide	WP	= Alpaca
PES	= Polyester	WV	= Fleece wool
PES CS	= Polyester Trevira CS	AF	= Other fibres

ardecora

Milano

AVANTGARDE | AUTUMN 2020

Visione I 15467

¥53,100/m
6 Colourways
50%CO 29%CV 21%PES
Embroidery:55%CV 45%PES
Width: 138cm



Diamanti I 15470

¥45,000/m
6 Colourways
100%LI Embroidery:77%CV 23%PES
Width: 140cm



Movimento I 15475

¥53,700/m
7 Colourways
Ground:100%PES Flor:100%PES
Width: 145cm



Dietrich | 15468

¥23,100/m
4 Colourways
100%PAN Appl.100%PES
Width:320cm Usable width:280cm ↓



Cubismo I 15472

¥42,700/m
3 Colourways
100%CO
Width: 150cm
Martindale: 20,000



Cristalli I 15465

¥43,900/m
5 Colourways
100%LI
Width: 137cm



Struttura I 15469

¥38,700/m
3 Colourways
100%PAN
Appl.62%PVC 35%PES 3%PU
Width:150cm Usable width:133cm



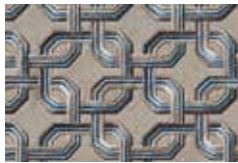
Tormalina I 15464

¥40,400/m
8 Colourways
76%CV 24%PES
Width: 140cm



Icona I 15473

¥45,000/m
11 Colourways
80%PVC 20%PES
Width: 150cm
Martindale: 25,000



Giada I 15471

¥43,300/m
4 Colourways
45%LI 35%CV 20%PES
Width: 140cm



Intarsio I 15463

¥22,500/m
3 Colourways
100%PES
Width: 300cm ↓



Mito | 15462

¥56,600/m
8 Colourways
Ground:50%CO 39%CV 11%PES
Flor:100%CV
Width: 140cm Martindale: 55,000



Lusso I 15466

¥40,400/m
6 Colourways
37%CO 34%LI 29%CV
Appl.40%WO 25%PES 20%PAN 15%CV
Width:140cm



Opale I 15474

¥57,700/m
4 Colourways
Ground:100%PES Flor:100%PES
Width: 145cm



HODSOLL MCKENZIE

LONDON

1851 | AUTUMN 2020

Babel I 21260

¥22,500/m
5 Colourways
70%CO 23%CV 7%LI
Width:145cm Usable width:140cm
Martindale: 50,000



Winslow I 21258

¥36,900/m
6 Colourways
48%CV 40%CO 7%PES 5%LI
Width: 137cm
Martindale: 43,000



Crystal Palace I 21264

¥22,100/m
6 Colourways
100%CO
Width: 137cm



Holman Hunt I 21270

¥21,900/m
5 Colourways
38%LI 28%WO 20%PES
10%CV 4%PA
Width: 152cm



Barbizon I 21263

¥15,600/m
8 Colourways
100%CO
Width: 137cm



Flowering I 21262

¥34,300/m
5 Colourways
53%CO 47%LI
Embroidery:100%CV
Width:140cm Usable width:131cm



Paxton I 21265

¥38,100/m
5 Colourways
56%LI 28%WP 9%CV 5%WV 2%PES
Width: 300cm



Millais I 21268

¥16,700/m
5 Colourways
90%CO 8%LI 2%PES
Width: 140cm
Martindale: 25,000



Caroline Elm I 21259

¥21,900/m
11 Colourways
45%CV 36%CO 19%PES
Width: 138cm
Martindale: 29,000



Effie Gray I 21266

¥17,000/m
11 Colourways
70%LI 25%PAN 5%WO
Width: 147cm



Kohinoor I 21261

¥32,000/m
4 Colourways
40%CO 25%CV 20%PES 15%LI
Width: 155cm Usable width:150cm



Velocipedia I 21269

¥24,500/m
3 Colourways
60%LI 40%CO
Width: 141cm



Sydenham I 21267

¥39,300/m
4 Colourways
55%LI 45%CO
Embroidery:100%PES
Width:137cm Usabel width:132cm

