

camira

BOOK 2

椅子張地

高機能 本革 ビニールレザー

パネル生地

camira はイギリスのファブリックメーカーです。オフィス、学校、店舗、病院、また電車、バス等の公共交通機関まで様々なコントラクト用椅子生地を製造販売しています。糸の撚糸から織りまで一貫して自社工場で生産し、高品質なファブリックを世界80カ国以上に輸出しています。BOOK2では、ポリエステル繊維を使用した機能性椅子生地を中心に、本革、ビニールレザー、パネル用生地などを紹介します。

Mark information



Task Seating
デスクチェア等の用途に適しています。



Soft Seating
大きなラウンジソファやリラクソチェアのような座面の柔らかいソファに適しています。



Panels
壁面パネル用の生地です。生地巾が広いので大きな壁面に使用できます。[Nexus][Synergy170]以外は椅子生地には使用できませんのでご注意ください。



Environmental
ウールや麻などの天然繊維、または再生ポリエステルを使用した環境にやさしいファブリックです。



Stain repellent
防汚性能があります。



Waterproof
撥水性能があります。



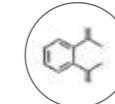
Anti-Microbial
抗菌性能があります。



Bleach Cleanable
漂白剤溶液を使用しても変色しにくい商品です。(漂白剤を使用する場合は目立たない所でお試し頂いてから御使用ください)



Anti-static
静電気防止性能があります。



Phthalate Free
フタル酸エステルを使用していない商品です。ビニールレザーに適合されています。



Manhattan

camira



Price ¥13,400/m

Width 140cm

Composition 100%Recycled Polyester

Martindale 50,000 cycles



Task seating



Cigarette & Match



Washable



Environmental



10
Year guarantee

Manhattan は 100%リサイクルポリエステルを使用して作られた椅子張地です。小さなグリッド調の模様がモダンな印象のドビー織りです。伸縮性があり、家具に張り込みやすくなっています。





Murphy
YI110



Lexington
YI113



Houston
YI380



Hudson
YI362



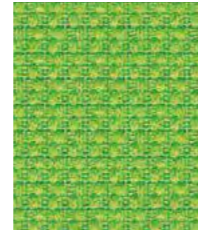
Monroe
YI106



Soho
YI381



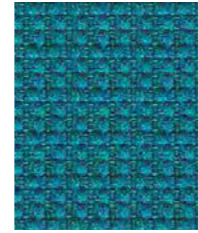
Park
YI188



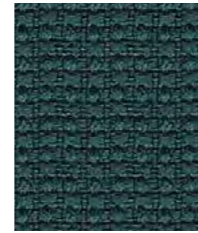
Ellis
YI365



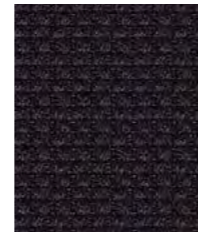
Sheridan
YI204



Leroy
YI160



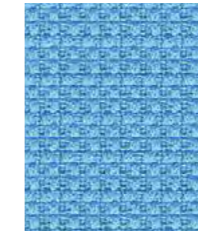
Penn
YI384



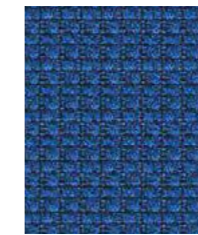
Capital
YI086



Bronx
YI364



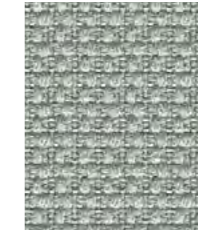
Watts
YI157



Astor
YI361



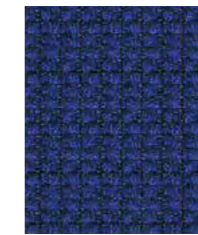
Rubin
YI026



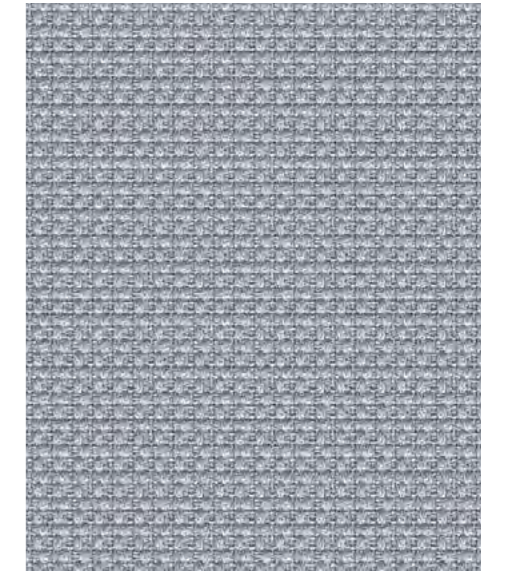
Jackson
YI385



Saks
YI389



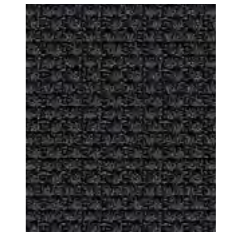
Staten
YI386



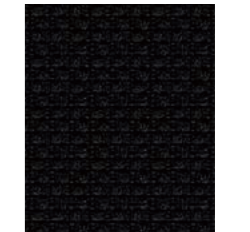
Varick
YI173



Broadway
YI363



Chrysler
YI390



Macys
YI009

Oceanic

camira



Price	¥ 18,400/m
Width	140cm
Composition	100%Recycle polyester including 50%SEAQUAL yarn
Martindale	100,000 cycles



Task seating



Soft seating



Cigarette & Match



Environmental



10 Year guarantee

Oceanic は、海洋プラスチックゴミから作られた「Seaqual Yarn」を使用した、新しいリサイクルファブリックです。「Seaqual Yarn」は、マドリッドの海洋保護団体、Seaqual Initiative と、スペインの大手繊維メーカー ANTEX が共同で開発したリサイクル糸です。この Oceanic が 4m 使用されるごとに、1 キログラムの海洋ゴミが取り除かれる計算になります。Oceanic はアメリカの家具展示会 NEOCON にて、インテリア業界で最も革新的な製品やアイデアに贈られる HIP アワードを受賞しました。



SEAQUAL

Photographic fabric scans are not colour accurate. Always request actual fabric samples before ordering.



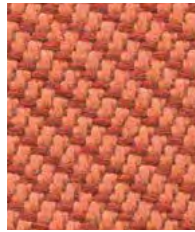
Seafarer
OOC16



Gulf
OOC15



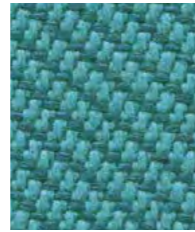
Paddle
OOC13



Coral
OOC05



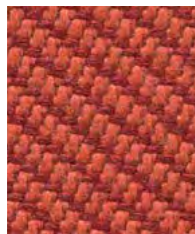
Sea
OOC04



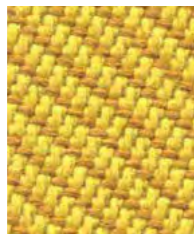
Jetsam
OOC02



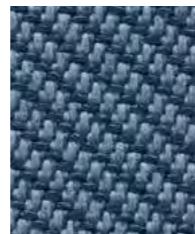
Riptide
OOC14



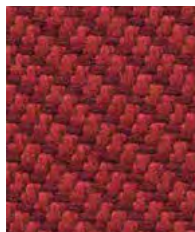
Aquatic
OOC12



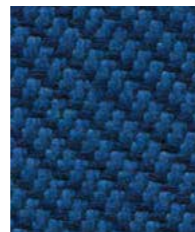
Barrier
OOC07



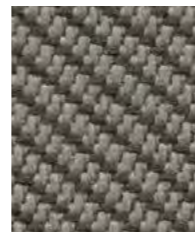
Neptune
OOC11



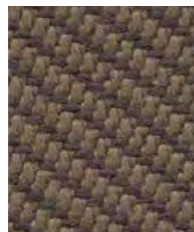
Abyss
OOC10



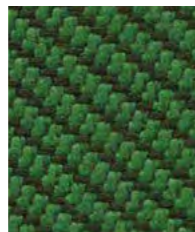
Atoll
OOC06



Bay
OOC08



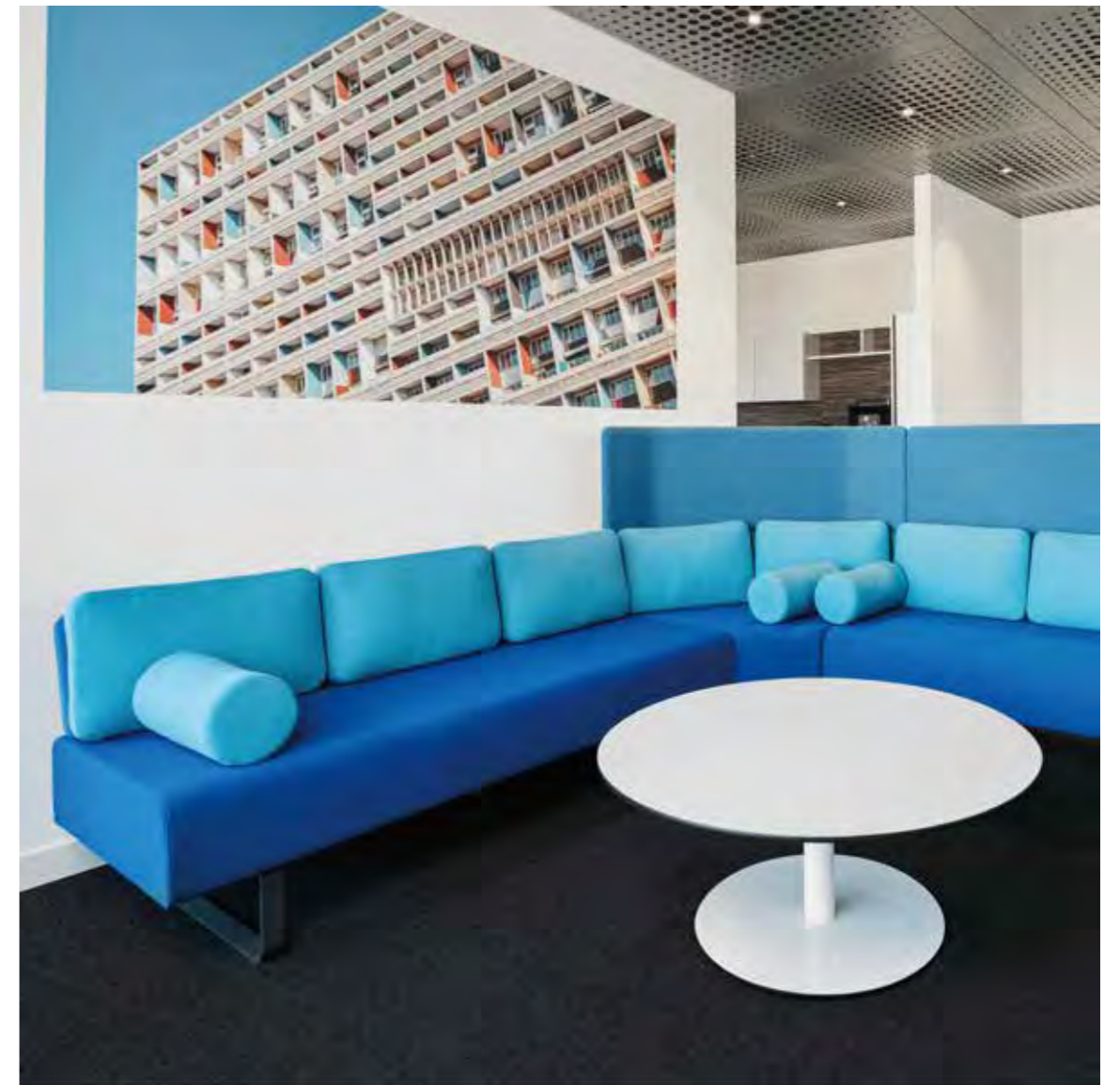
Shore
OOC09



Coast
OOC03



Flotsam
OOC01



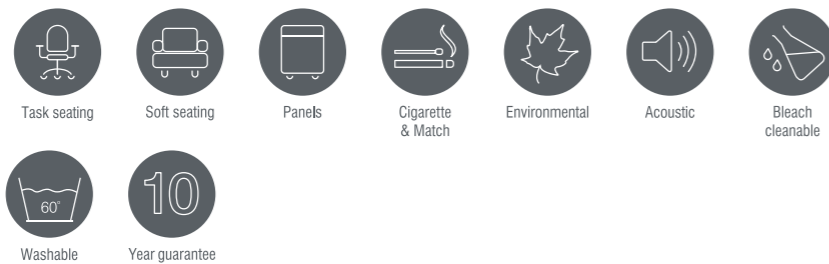
ドイツ鉄道、ベルリンオフィスの施工例

Quest

camira



Price	¥ 14,000/m
Width	137cm
Composition	100%Recycled Polyester including 75%SEAQUAL yarn
Martindale	100,000 cycles

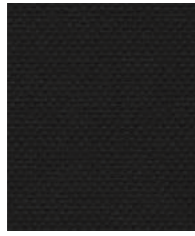


Quest は SEAQUAL INITIATIVE とのパートナーシップにより制作されました。SEAQUAL YARN を 75% 使用しており、残りの 25% もリサイクルプラスチックから作られた再生糸を使用しています。カラーは、海の美しさを表現した 27 色展開。Camira は Quest の販売数量に応じて、SEAQUAL INITIATIVE に寄付をしています。

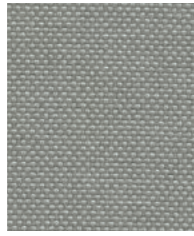


SEAQUAL

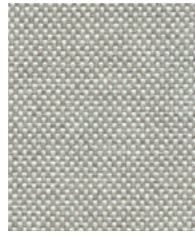
Photographic fabric scans are not colour accurate. Always request actual fabric samples before ordering.



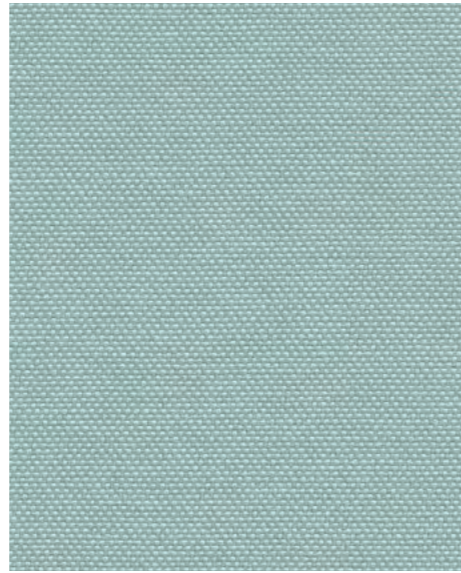
Depth
QUE01



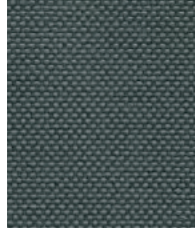
Fossil
QUE02



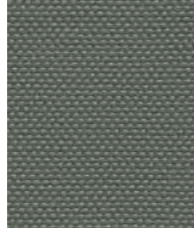
Barnacle
QUE03



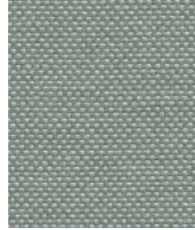
Ripple
QUE07



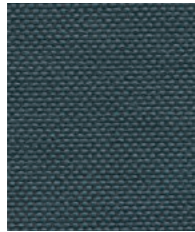
Mussel
QUE04



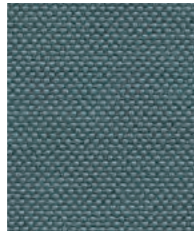
Quartz
QUE05



Shell
QUE06



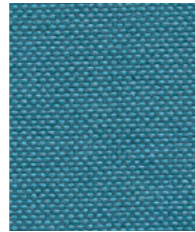
Whelk
QUE08



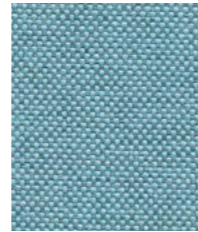
Limpet
QUE09



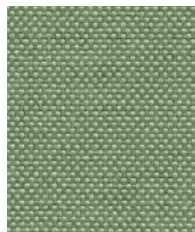
Rock Pool
QUE10



Wave
QUE11



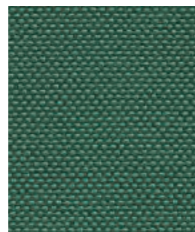
Tide
QUE12



Sea Grass
QUE13



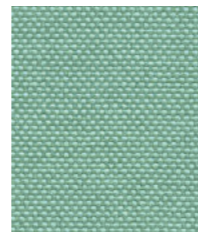
Algae
QUE14



Kelp
QUE15



Sea Foam
QUE16



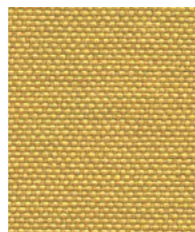
Urchin
QUE17



Abalone
QUE18



Driftwood
QUE19



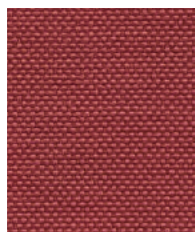
Sandstone
QUE20



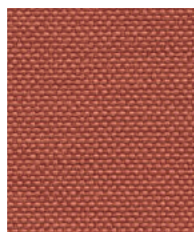
Beach Comber
QUE21



Salt
QUE22



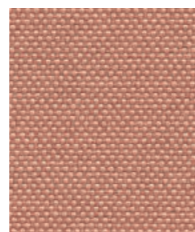
Cockle
QUE23



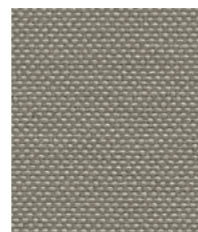
Crab
QUE24



Clay
QUE25



Shrimp
QUE26



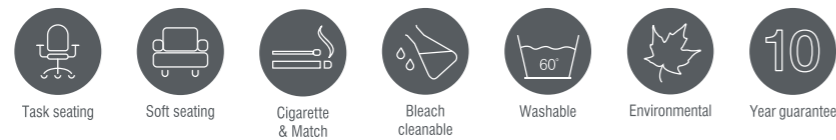
Pebble
QUE27

Rivet

camira

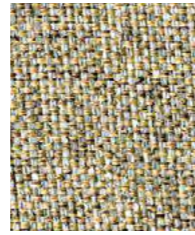


Price	¥ 11,900/m
Width	140cm
Composition	100%REPREVE Recycled Polyester
Martindale	50,000 cycles

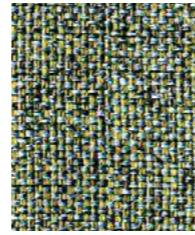


Rivet は「100% REPREVE」を使用した椅子生地です。
「REPREVE」はペットボトルから作られたリサイクルポリエステルです。肌触りの良いドライな風合いと、ツイードのようなシックでミックス感のあるカラーリングがおしゃれです。カラーバリエーションは 33 色。

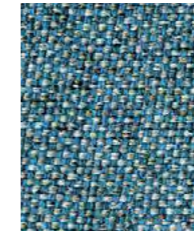




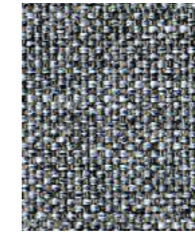
Resin
EGL04



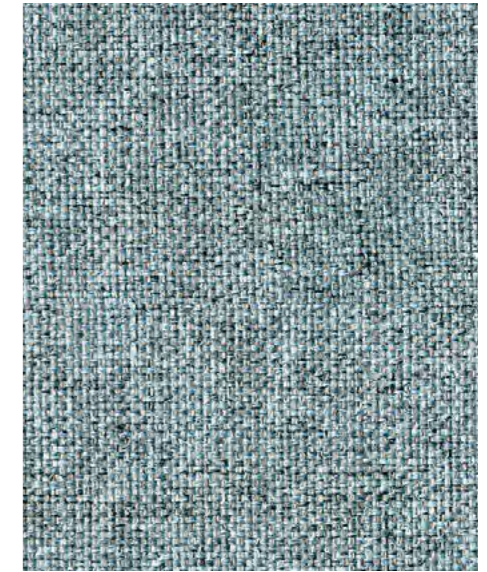
Chromoly
EGL19



Quench
EGL23



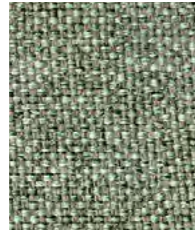
Solder
EGL18



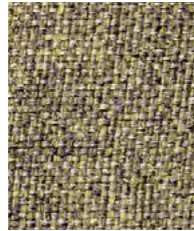
Prime
EGL16



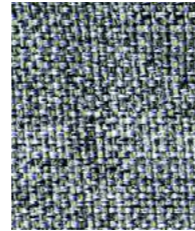
Molten
EGL09



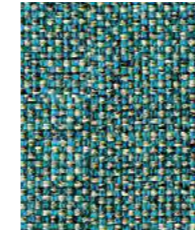
Ferrous
EGL15



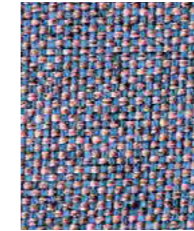
Wire
EGL03



Tensile
EGL20



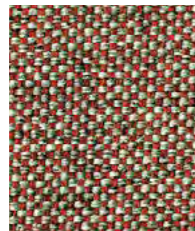
Verdigris
EGL21



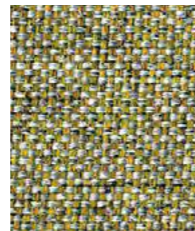
Fuse
EGL08



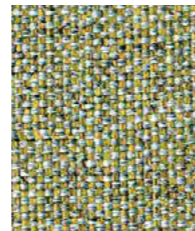
Forge
EGL12



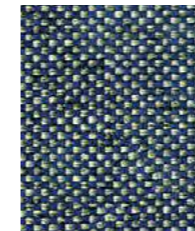
Abraid
EGL13



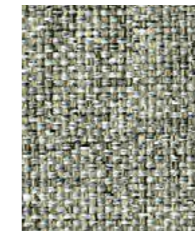
Alloy
EGL05



Burnish
EGL11



Hammer
EGL27



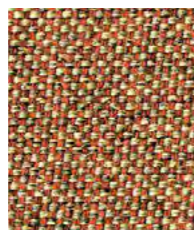
Vitreous
EGL01



Galvanise
EGL26



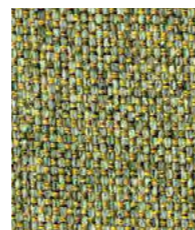
Hemlock
EGL34



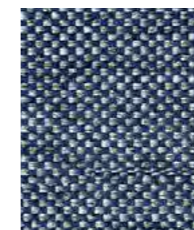
Copper
EGL14



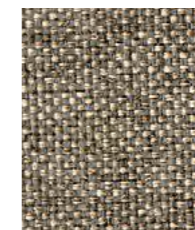
Spark
EGL10



Tungsten
EGL07



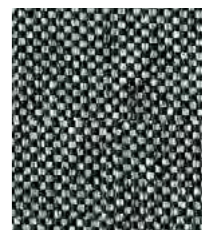
Crucible
EGL24



Cast
EGL25



Twig
EGL49



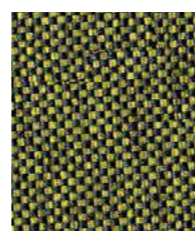
Grey Brindle
EGL50



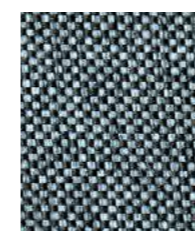
Woodrose
EGL33



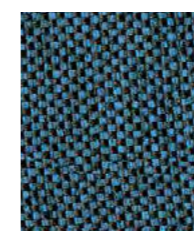
Deep Clay
EGL32



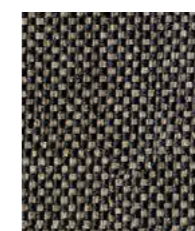
Olive
EGL31



Deep Sea
EGL48



Lagoon
EGL35



Otter
EGL36



Charcoal
EGL37

Halcyon Collection

camira

Aspen & Blossom

Price ¥ 19,200/m

Width 140cm

Composition 100%Polyester with flame retardant coating

Martindale 50,000 cycles

Cedar

Price ¥ 18,200/m

Width 140cm

Composition 100%Polyester with flame retardant coating

Martindale 40,000 cycles



Task seating



Soft seating



Medium Hazard



Anti-microbial



Stain repellent



Waterproof



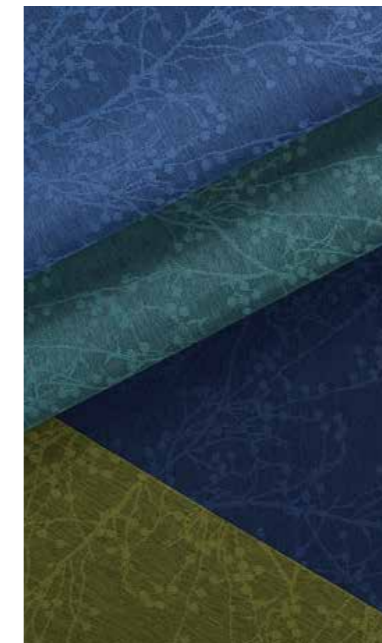
Bleach cleanable



10 Year guarantee



Aspen



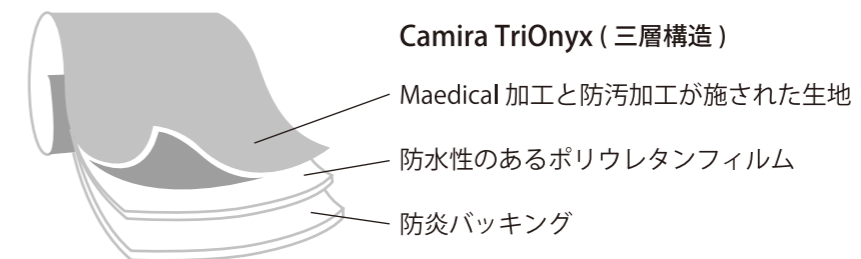
Blossom



Cedar

Camira 「TriOnyx」

Halcyon Collection は、より高い機能が必要なエリアのために開発された新しく革新的な機能性ファブリックです。Camira の TriOnyx 技術により、ファブリックのソフトな風合いを残したまま、防汚性能、撥水性能に加え先進的な抗菌テクノロジーの Maedical 加工による抗菌性能、さらに防炎性能を実現しています。Maedical 加工は人に触れても安心で、環境にやさしい商品です。

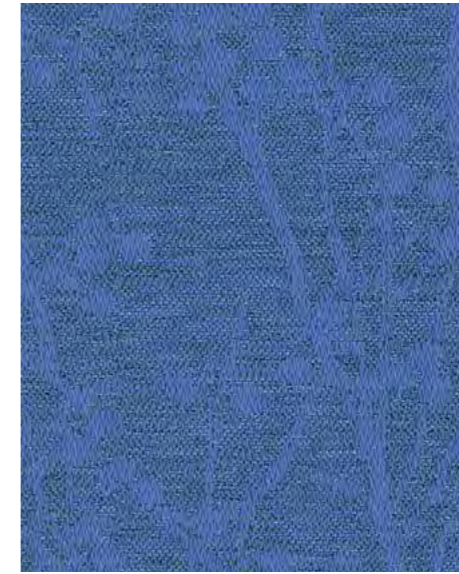




Blossom
Tigerlily HPB11



Aspen
Petal HPA01



Blossom
Dewdrop HPB05



Aspen
Brook HPA04



Cedar
Tigerlily HPC11



Aspen
Tigerlily HPA11



Cedar
Petal HPC01



Blossom
Petal HPB01



Cedar
Dewdrop HPC05



Aspen
Dewdrop HPA05



Cedar
Brook HPC04



Blossom
Brook HPB04



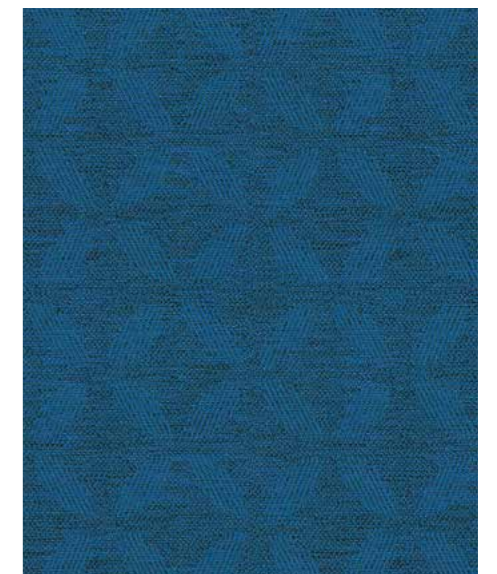
Blossom
Lavender HPB02



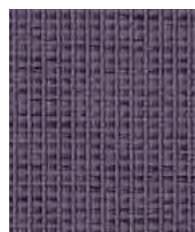
Aspen
Berry HPA03



Blossom
Lake HPB09



Aspen
Botanic HPA06



Cedar
Lavender HPC02



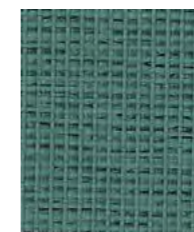
Aspen
Lavender HPA02



Cedar
Berry HPC03



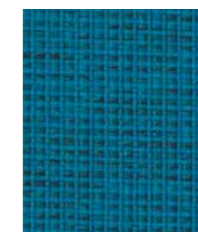
Blossom
Berry HPB03



Cedar
Lake HPC09



Aspen
Lake HPA09



Cedar
Botanic HPC06



Blossom
Botanic HPB06

Photographic fabric scans are not colour accurate. Always request actual fabric samples before ordering.



Blossom
Gooseberry HPB07



Aspen
Evergreen HPA08



Cedar
Gooseberry HPC07



Aspen
Gooseberry HPA07



Cedar
Evergreen HPC08



Blossom
Evergreen HPB08



Blossom
Almond HPB10



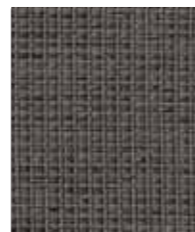
Aspen
Nutmeg HPA12



Cedar
Almond HPC10



Aspen
Almond HPA10



Cedar
Nutmeg HPC12

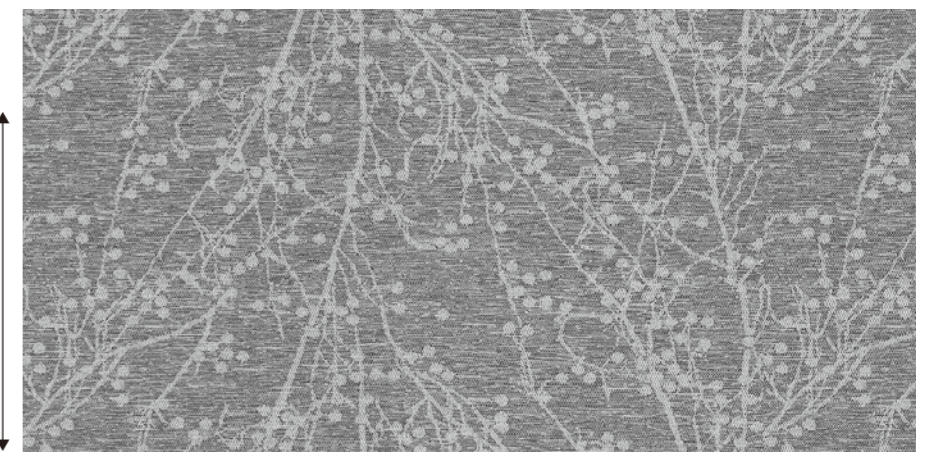


Blossom
Nutmeg HPB12



Blossom

Blossom pattern



18.0cm

38.5cm

Track

camira



Price ¥ 20,400/m

Width 140cm

Composition 100%TreviraCS Flame Retardant Polyester

Martindale 80,000 cycles



Task seating



Soft seating



Medium Hazard
M1 / B1



Washable



10
Year guarantee

TrackはTrevira CSのシェニール糸を使った椅子生地です。リラックスできる肌触りの良いテクスチャーで、防災性能を持ち合わせています。水洗いが可能なので脱着式の家具等への使用もおすすめです。マーチンデール値が80,000cyclesと高く、ホテル、教育機関、医療機関等、様々な案件に安心してご使用いただけます。





Carry
HTK13



Route
HTK08



Drive
HTK02



Rail
HTK10



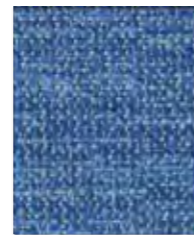
Traverse
HTK18



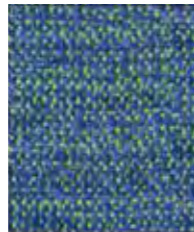
Scramble
HTK17



Roam
HTK05



Location
HTK09



Footprint
HTK14



Passage
HTK15



Path
HTK03



Discover
HTK11



Clue
HTK04



Way
HTK07



Hunt
HTK12



Place
HTK06



Rock
HTK01



Rough
HTK16

Urban

camira



Price ¥ 14,300/m

Width 140cm

Composition 100%Recycled Flame Retard Polyester

Martindale 100,000 cycles



Task seating



Cigarette
& Match



Medium Hazard
R1



Washable

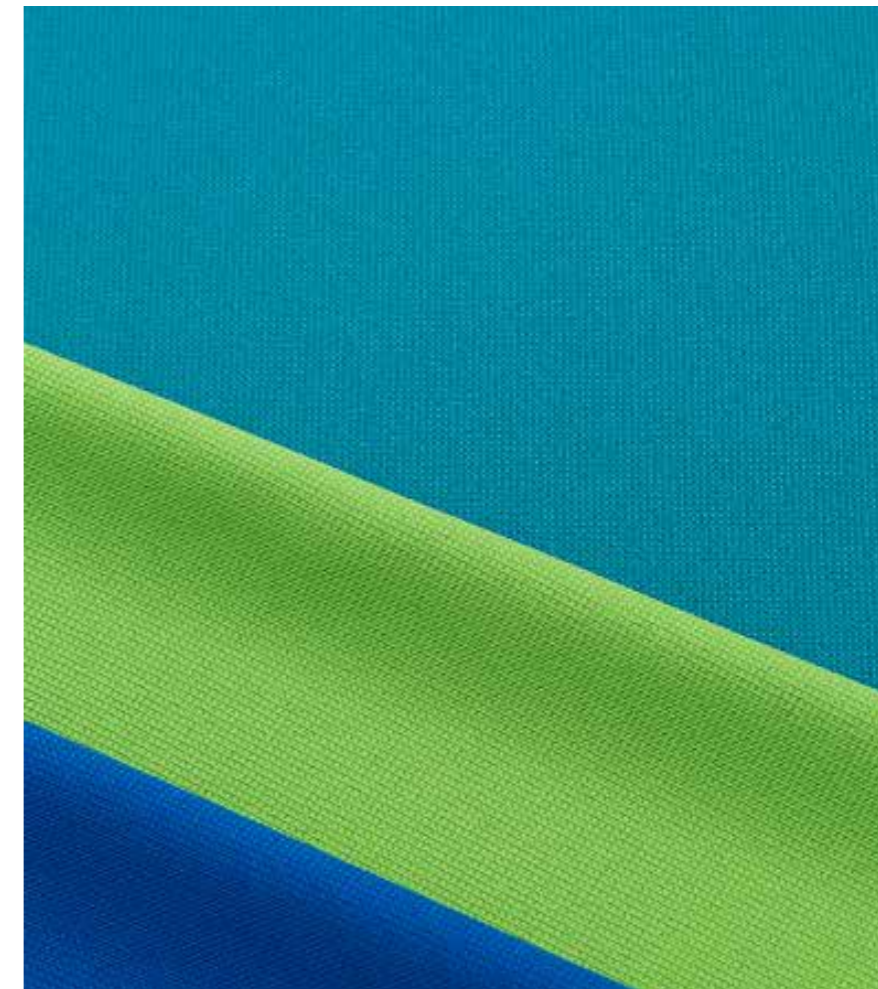


Environmental



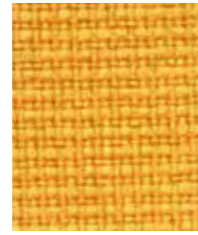
10
Year guarantee

Urban は 100%リサイクルポリエステルを使用した椅子張地です。都市のストリートからインスピレーションを受けたグリッド調のシャープな織り柄が特徴です。25色のカラーバリエーションです。

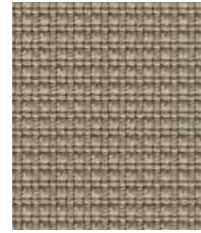




Living
YN108



Avenue
YN148



District
YN212



Congestion
YN079



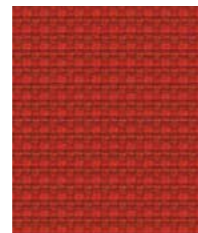
Highrise
YN076



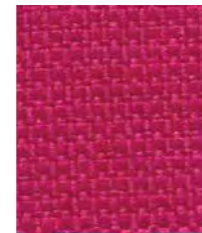
Graffiti
YN204



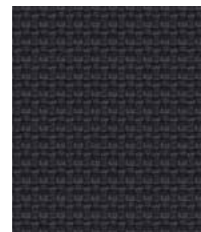
Bench
YN091



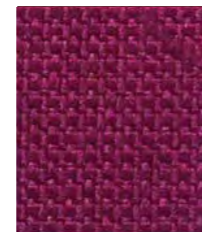
Precinct
YN027



Cosmopolitan
YN203



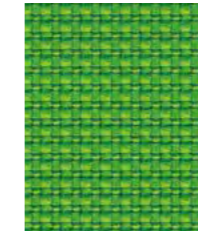
Underground
YN145



Freeway
YN211



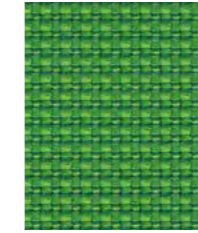
Intersection
YN205



Uptown
YN200



Ringroad
YN208



Suburbia
YN159



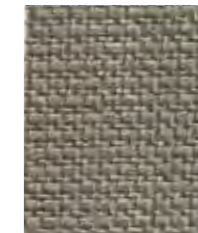
Sidewalk
YN094



Penthouse
YN202



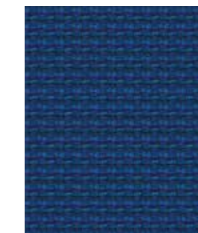
Junction
YN083



Curb
YN206



Boulevard
YN160



Conurbation
YN082



Square
YN207



Streetsmart
YN209



Nightowl
YN210



Subway
YN009

X2

camira



Price	¥ 14,300/m
Width	140cm
Composition	100%Recycled Flame Retardant Polyester
Martindale	100,000 cycles



X2 は、高い摩耗強度と伸縮性、防災性を兼ね備えた椅子張地です。組成「100%リサイクルポリエステル」の内 25%は、自社工場から出た残糸や切り落とした耳糸などの産業廃棄物から作られたリサイクルポリエステルを使用している、環境に配慮した商品です。



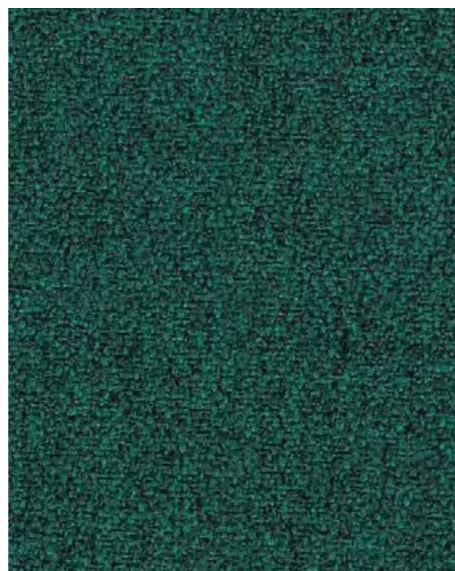
Photographic fabric scans are not colour accurate. Always request actual fabric samples before ordering.



Percentage
AK016



Number
AK020



Ratio
AK001



Divide
AK015



Algebra
AK005



Subtract
AK013



Fraction
AK003



Polygon
AK002



Multiply
AK014



Equation
AK004



Value
AK006



Positive
AK019



Median
AK011



Calculus
AK008



Maths
AK007



Arithmetic
AK018



Add
AK012



Metric
AK010 2025麋番色



Acute
AK009



Formula
AK017

Xtreme

camira



Price ¥ 14,000/m

Width 140cm

Composition 100%Recycled Flame Retardant Polyester

Martindale 100,000 cycles



Task seating



Cigarette
& Match



Medium Hazard
B1



Washable



Environmental



10
Year guarantee

Xtreme は 100%リサイクルポリエステルを使用したモダンなクレープ織りの椅子張地です。高い磨耗強度、伸縮性、非ピリング性、防炎性により、オフィス用チェアにとっても人気な商品です。この生地は、使用済み製品をリサイクルしてつくられたポリエステル (Post-consumer polyester) を使用しています。それは埋立地への廃棄物を減らし、さらに新たな原材料を節約することにつながります。





Adobo
YS165



Solano
YS072



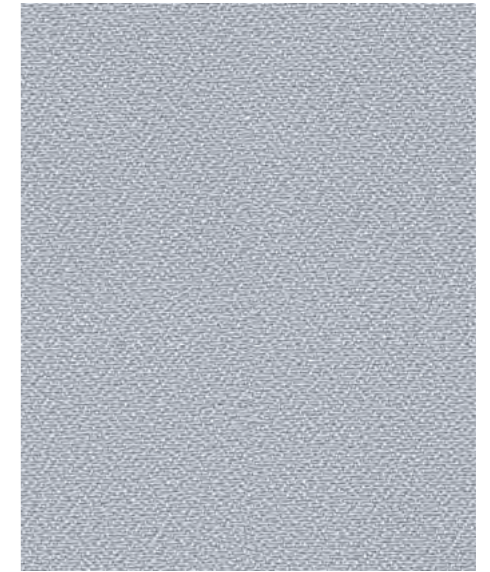
Parasol
YS073



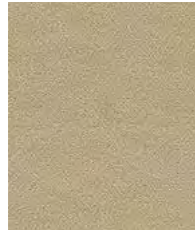
Steel
YS095



Madura
YS156



Rum
YS173



Aruba
YS108



Tortuga
YS168



Bridgetown
YS102



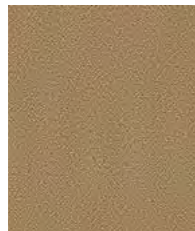
Bluebell
YS097



Campeche
YS074



Apple
YS096



Sandstorm
YS071



Lobster
YS076



Belize
YA105



Diablo
YS101



Martinique
YS004



Lombok
YS159



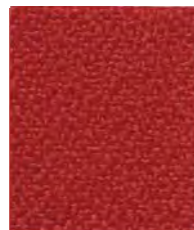
Appledore
YS077



Slip
YS094



Nougat
YS091



Panama
YS079



Honeymoon
YS035



Scuba
YS082



Tonga
YS160



Krabi
YS141



Osumi
YS171



Tokara
YS136



Tarot
YS084



Ocean
YS100



Curacao
YS005



Windjammer
YS047



Blizzard
YS081



Padang
YS145



Sombrero
YS046



Tobago
YS030



Cayman
YS024



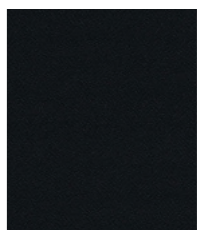
Costa
YS026



Taboo
YS045



Bonaire
YS172



Havana
YS009

Vintage

camira



Price ¥ 36,200/m² (販売単位 1 hide 約5.5m²)

Width -

Composition 100%Corrected Grain Leather

Martindale 100,000 cycles



Task seating



Soft seating



Cigarette
& Match



Year guarantee

Vintage は、西ヨーロッパの雄牛を使用した天然皮革です。広大な敷地の中でストレスなく丁寧に育てられたヨーロッパの牛による原皮は、きめ細かく、やわらかで世界的に高級品とされています。

Camira の天然皮革は、上質な質感、美しいカラーリングが特徴でセミアニリン仕上げでつくられています。傷の少ない厳選された良質の原皮を使い、染料で染めた後に少量の顔料を使うことで革の表面の損傷を隠し、革本来の風合いを残しつつも高級感のある見た目と傷や汚れに対する耐性を持ち合わせています。





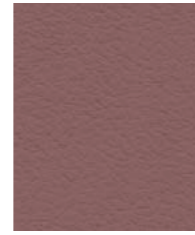
Maybach
VIN58



Hyper
VIN91



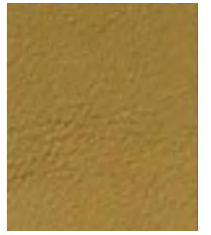
Conform
VIN95



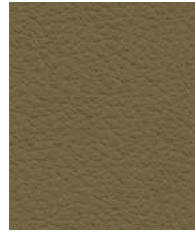
Radical
VIN92



Romeo
VIN29



Daimler
VIN65



Shelby
VIN32



Element
VIN90



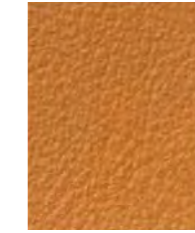
Social
VIN87



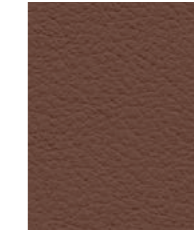
Morgan
VIN46



Ferrari
VIN25



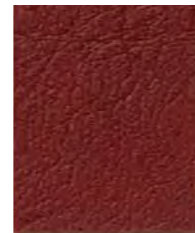
Cursor
VIN53



Camargue
VIN12



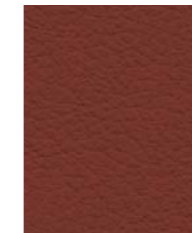
Royce
VIN24



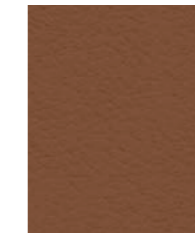
Evolve
VIN99



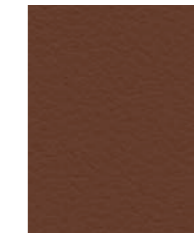
Maranello
VIN05



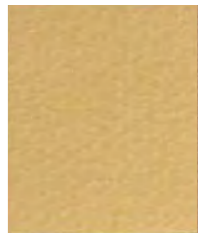
Pontiac
VIN71



Media
VIN98



Bentley
VIN16



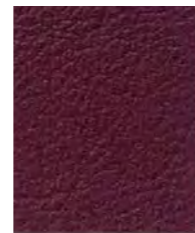
Singer
VIN26



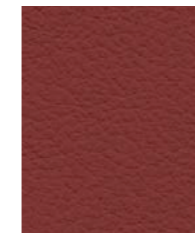
Cobra
VIN85



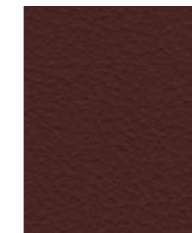
Spyder
VIN28



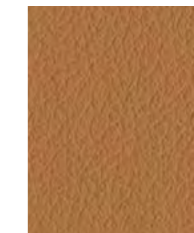
Portal
VIN80



Daytona
VIN34



Lumix
VIN82



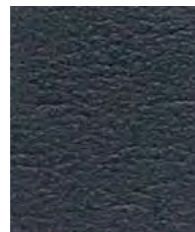
Phantom
VIN10



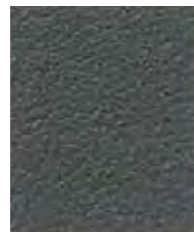
Porsche
VIN19



Acura
VIN86



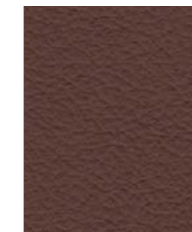
Thunderbird
VIN51



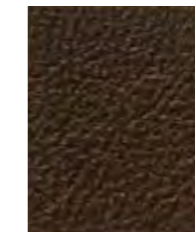
Function
VIN83



Riley
VIN40



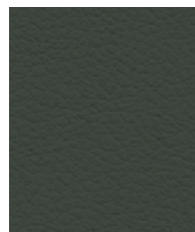
Stag
VIN38



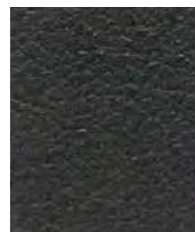
Vanquish
VIN45



Hub
VIN94



Connaught
VIN07



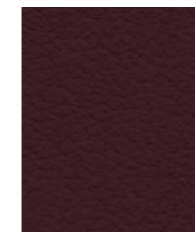
Bugatti
VIN84



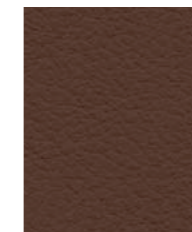
Tuscan
VIN88



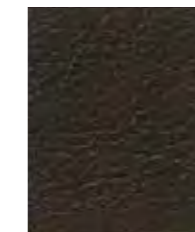
Aston
VIN18



Maserati
VIN48



Jensen
VIN42



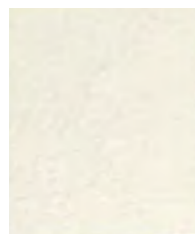
Mustang
VIN41



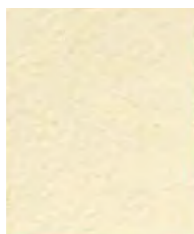
Sinclair
VIN14

グレーでマークされた色番は、取寄せに 10 日程度、その他の色番は 4~7 週間程度かかります。

Photographic fabric scans are not colour accurate. Always request actual fabric samples before ordering.



Sprite
VIN50



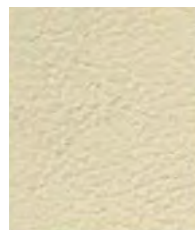
Pinto
VIN22



Healey
VIN43



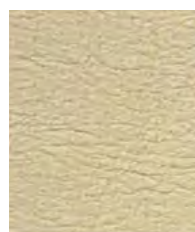
Brooklands
VIN31



Javelin
VIN56



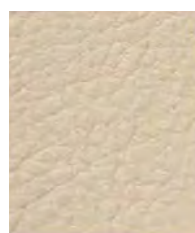
Limousine
VIN06



Veyron
VIN57



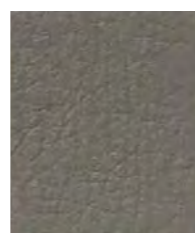
Evoque
VIN21



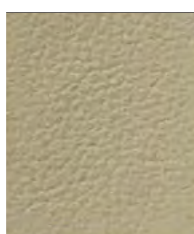
Innovate
VIN93



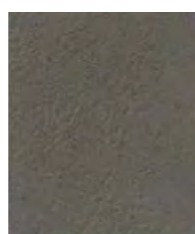
Hillman
VIN60



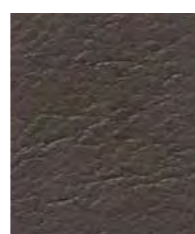
Cache
VIN96



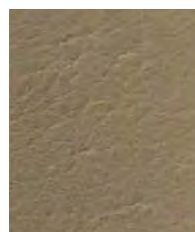
Novel
VIN97



Silver Shadow
VIN02



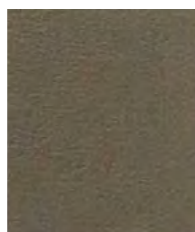
Crossley
VIN89



Minimal
VIN81



Rambler
VIN23



Lincoln
VIN27



Seraph
VIN01

Vita

camira



Price ¥ 14,500/m

Width 140cm

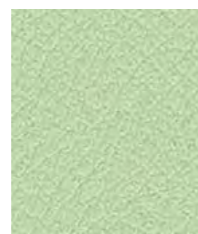
Composition Surface:98.5%PVC 1.5%PU Substrate:50%Polyester 50%Cotton

Martindale 100,000 cycles

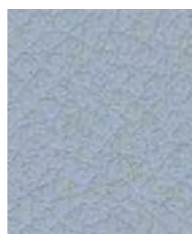


Vitaはマットな質感のビニールレザーです。高い摩耗強度に加え、撥水性、防汚性、抗菌性があります。さらに塩素系漂白剤の使用も可能なので、ホテルや様々な施設で安心してご利用いただけます。人への有害性が懸念される「フタル酸エステル」不使用の商品です。





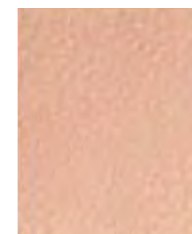
Surf
ITA48



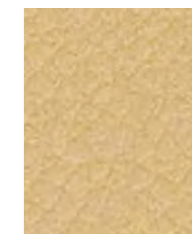
Bubbles
ITA36



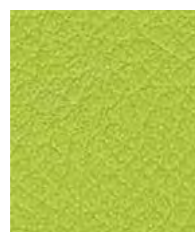
Wisteria
ITA49



Hollyhock
ITA51



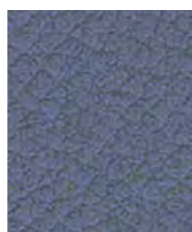
Daisy
ITA43



Spring
ITA40



Sapphire
ITA16



Porcelain
ITA15



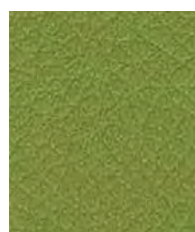
Punch
ITA35



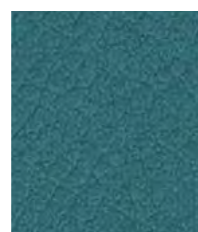
Carrot
ITA41



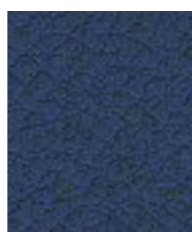
Lemon
ITA33



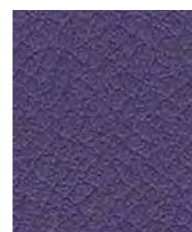
Avocado
ITA06



Waterfall
ITA18



Sail
ITA54



Envy
ITA55



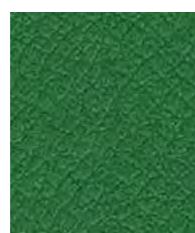
Amplified
ITA52



Squash
ITA05



Olive
ITA09



Yucca
ITA30



Peacock
ITA19



Clash
ITA56



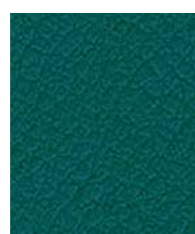
Flamingo
ITA34



Tomato
ITA08



Yellow
ITA03



Breeze
ITA32



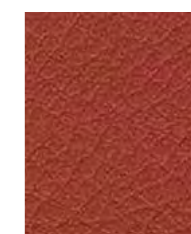
Rocker
ITA53



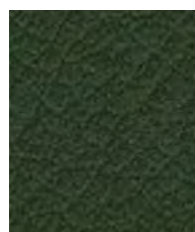
Amethyst
ITA17



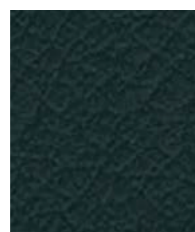
Pink
ITA20



Rust
ITA11



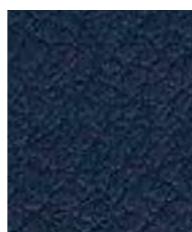
Wreath
ITA29



Seaweed
ITA31



Marina
ITA21



Navy
ITA22

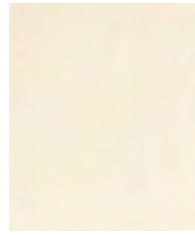


Plum
ITA23



Sin
ITA50

Photographic fabric scans are not colour accurate. Always request actual fabric samples before ordering.



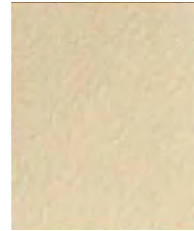
Corn silk
ITA37



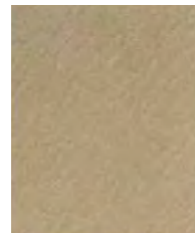
Bone
ITA38



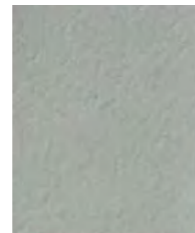
Swan
ITA42



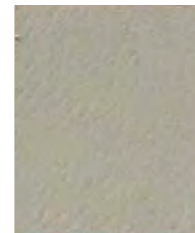
Chiffon
ITA44



Oatmeal
ITA02



Pigeon
ITA45



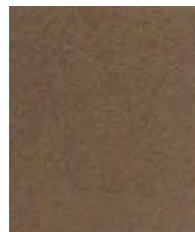
Seal
ITA01



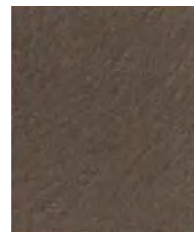
Alpaca
ITA46



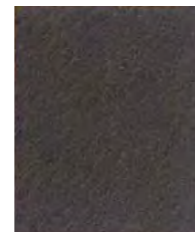
Koala
ITA04



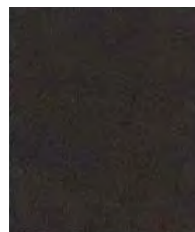
Golden
ITA39



Taupe
ITA10



Beetle
ITA47



Americano
ITA13



Espresso
ITA14



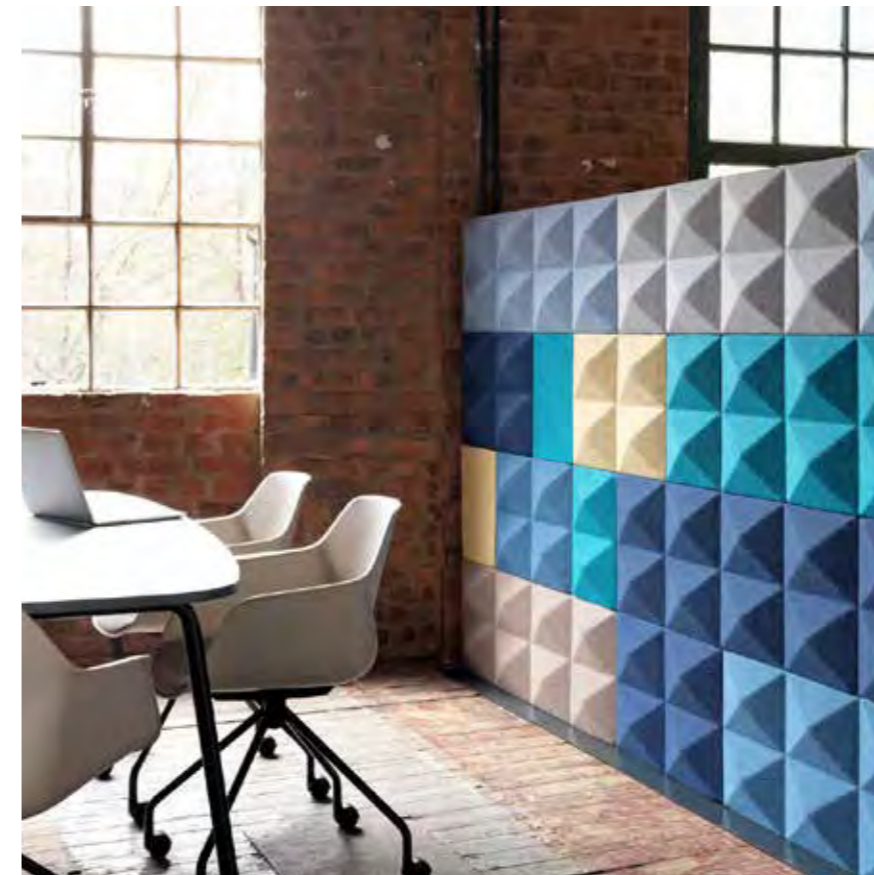
Hippo
ITA07



Noir
ITA12

Blazer Lite

camira



Price ¥17,600/m

Width 170cm

Composition 100%Virgin Wool

Martindale -



Panels



SBI



Acoustic



Environmental



10
Year guarantee

Blazer Lite は、オフィスの間仕切りなどに使用するための、100%ウールのパネル用ファブリックです。柔らかな風合いのフェルト仕上げと、ミックス調の色合いが特徴です。





Bliss
LTH48



Buddha
LTH56



Worship
LTH59 2025 麁番色



Aspire
LTH52



Love
LTH47 2025 麁番色



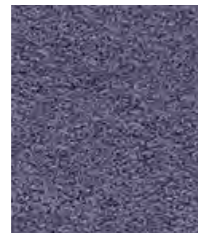
Angel
LTH49 2025 麁番色



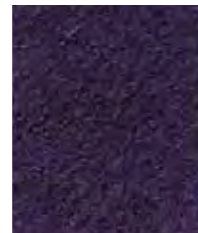
Praise
LTH54



Devoted
LTH58



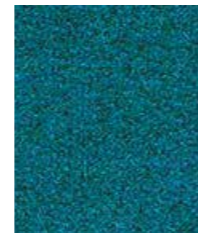
Pastel
LTH65 2025 麁番色



Faith
LTH68



Pamper
LTH66 2025 麁番色



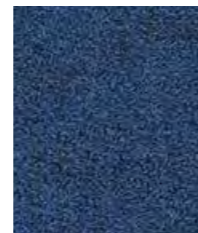
Balance
LTH41



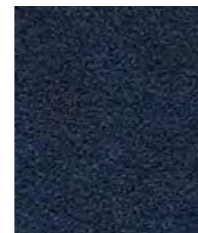
Harmony
LTH63



Dainty
LTH64



Wish
LTH67



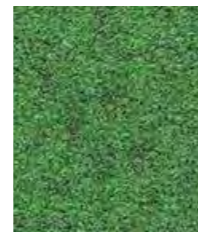
Mood
LTH44



Hope
LTH50 2025 麁番色



Happy
LTH55



Graceful
LTH51



Shelter
LTH60



Hush
LTH42



Retreat
LTH39



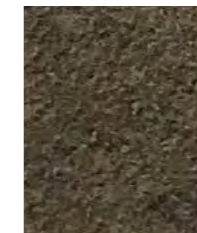
Daydream
LTH46



Pillow
LTH43



Tender
LTH53



Verity
LTH57 2025 麁番色



Cuddle
LTH62



True
LTH61



Solace
LTH70



Haven
LTH40



Freedom
LTH69

Cara

camira



Price ¥11,100/m

Width 170cm

Composition 100%Polypropylene

Martindale -



Panels



SBI



Acoustic



Bleach
cleanable



10
Year guarantee

Cara は、100%ポリプロピレンのパネル用ファブリックです。デスクスクリーン、オフィスパネル、ピンボードなどに幅広く使用されています。





Spray
EJ033



Ronay
EJ189



Dolphin
EJ105



Vit
EJ184



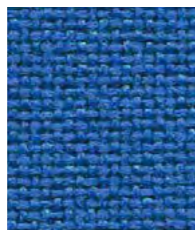
Glass
EJ004



Hillswick
EJ190



Carron
EJ015



Galilee
EJ125



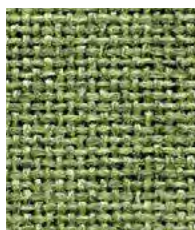
Inverness
EJ175



Lomond
EJ192



Shetland
EJ191



Fair Isle
EJ186



Adriatic
EJ154



Beltane
EJ193



Chaucer
EJ172



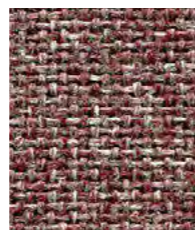
Clan
EJ169



Staffa
EJ185



Easdale
EJ188



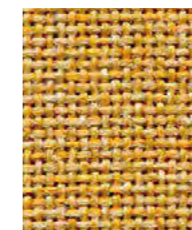
Lossie
EJ197



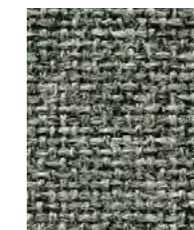
Tummel
EJ038



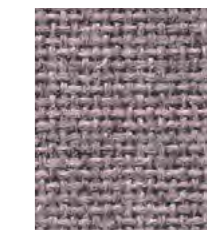
Austen
EJ173



Maree
EJ195



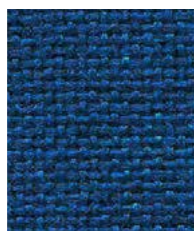
Portland
EJ016



Denny
EJ196



Lora
EJ187



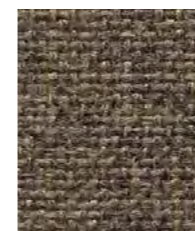
Clunie
EJ180



Walten
EJ011



Pitlochry
EJ076



Lerwick
EJ194



Merrick
EJ048



Lead
EJ104



Black
EJ138

Sonus & Sonus Etch

camira

Sonus

Price ¥ 13,200/m

Width 170cm

Composition FHR : 72%Polyester 18%Polyamide 10%Viscose

FHU : 57%Polyester 43%Polyamide

Sonus Etch

Price ¥ 13,200/m

Width 155cm

Composition SJR : 72%Polyester 18%Polyamide 10%Viscose

SJE : 57%Polyester 43%Polyamide



Panels



SBI



Acoustic

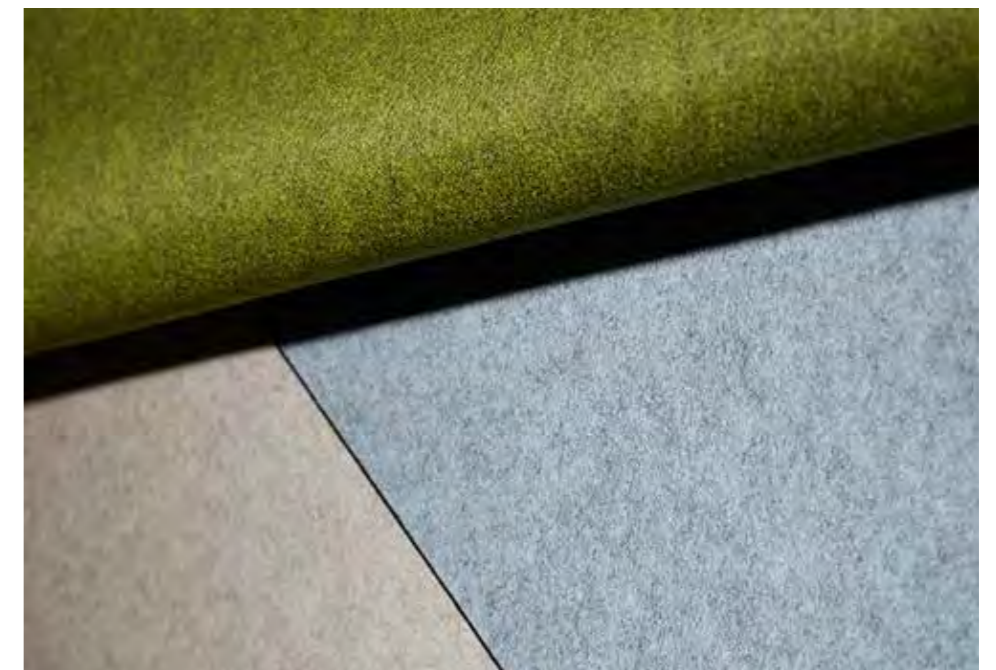


5
Year guarantee



Sonus Etch

Sonus はプレスフェルト仕上げのパネル用ファブリックです。吸音性能があり、発色のよい豊富なカラーバリエーションが特徴です。Sonus Etch はダイヤ柄のエンボス加工をしたパネル用ファブリックです。こちらはグレートーンの2色展開です。



Sonus



Scribe
SJR03



Carve
SJE04



Voice
FHR02



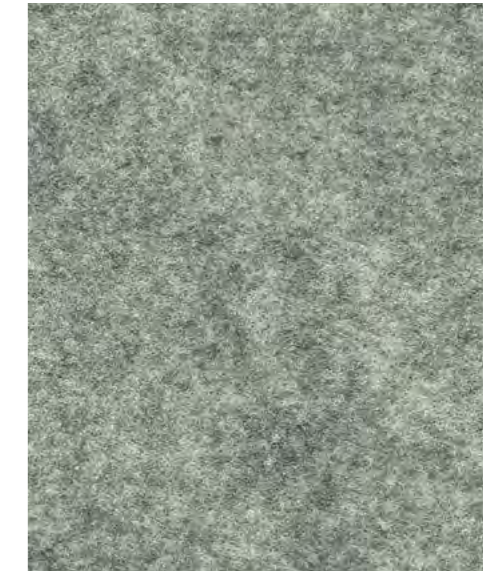
Audio
FHR06



Melody
FHR07



Soul
FHR13



Beat
FHR03



Rap
FHU11



Song
FHR01



Pop
FHR09



Acoustic
FHR12



Music
FHU04



Chorus
FHR17



Lyric
FHU15



Classical
FHU14



Vocal
FHU08



Verse
FHR16



Amp
FHR05



Chime
FHU10

Synergy 170

camira

Price	¥ 20,400/m
Width	170cm
Composition	95%Virgin Wool 5%Polyamide
Martindale	100,000 cycles



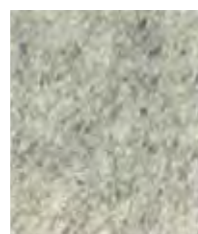
Synergy170 は、人気の椅子張地「Synergy」を 170cm 幅のパネル用サイズにした商品です。カラーは Synergy の 75 色から 24 色を厳選しました。

Camira では、発展途上国などに清潔で安全な水の提供を手助けをするチャリティ団体、「Just a Drop」に、Synergy シリーズの売り上げの一部を寄付しています。





Level
LDP20



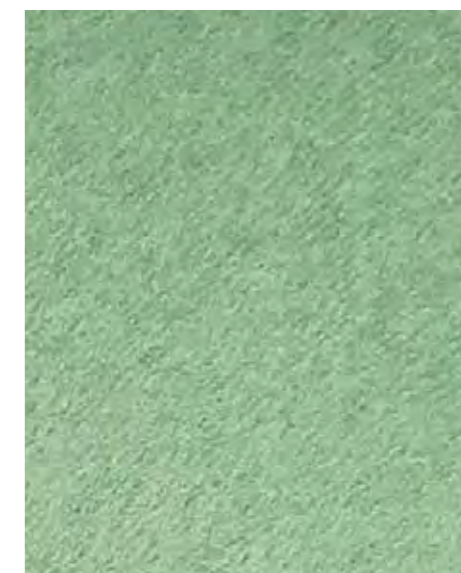
Serendipity
LDP08



Gather
LDP46



Support
LDP55



Regard
LDP54



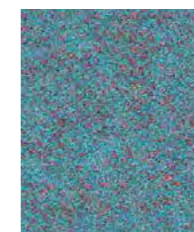
Loop
LDP18



Affix
LDP32



Summon
LDP45



Kinship
LDP56



Combo
LDP77



Work
LDP73



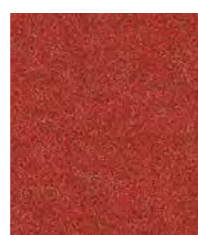
Guild
LDP63



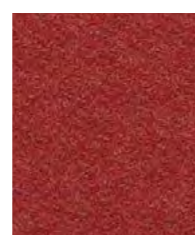
Pact
LDP53



Append
LDP49



Mutual
LDP84



Share
LDP85



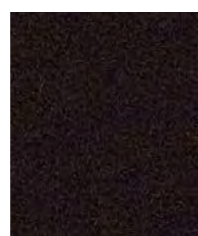
Collaborate
LDP68



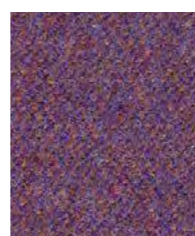
Group
LDP59



Chemistry
LDP35



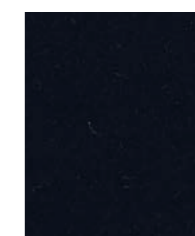
Process
LDP88



Fellowship
LDP66



Alike
LDP62



Sync
LDP69



Compound
LDP25

シート名/品名	品番	上代価格 (税抜) /m	生地巾 (cm)	組成	摩耗強度 (Martindale)	備考
Aspect	ACT	不継続	140	75%TreviraCS Flame Retardant Polyester 25%Polyester	35,000	
Manhattan	YI	¥13,400	140	100%Recycled Polyester	50,000	
Oceanic	OOC	¥18,400	140	100%Recycled Polyester including 50%SEAQUAL yarn	100,000	
Quest ※NEW	QUE	¥14,000	137	100%Recycled Polyester including 75% SEAQUAL yarn	100,000	
Regent	REG	不継続	140	100%Flame Retardant Polyester	50,000	※ミニマム 5m からの販売 になります。
Rivet	EGL	¥11,900	140	100%Repreve Recycled Polyester	50,000	
The Halcyon Collection Aspen	HPA	¥19,200	140	100%Polyester with flame retardant coating	50,000	撥水 / 防汚 ※Linden, Poplar は不継続
Blossom	HPB	¥19,200	140	100%Polyester with flame retardant coating	50,000	撥水 / 防汚
Cedar	HPC	¥18,200	140	100%Polyester with flame retardant coating	40,000	撥水 / 防汚
Track	HTK	¥20,400	140	100%TreviraCS Flame Retardant Polyester	80,000	
Urban	YN	¥14,300	140	100%Recycled Flame Retardant Polyester	100,000	
X2	AK	¥14,300	140	100%Recycled Flame Retardant Polyester	100,000	
Xtreme	YS	¥14,000	140	100% Recycled Flame Retardant Polyester	100,000	
Vintage	VIN	¥36,200/ m ²	-	100%Corrected Grain Leather	100,000	Leather (一部受注生産品) 販売単位 1 hide(約 5.5 m ²)
Deca	DEC	不継続	140	Surface:100%PU Substrate:100%Cotton	100,000	Vinyle Leather ※摩耗試験 ISO5470-1
Manila	MNL	¥15,200	140	Surface:100%PVC Substrate:100%Cotton	100,000	Vinyle Leather ※摩耗試験 ISO5470-2
Vita	ITA	¥14,500	140	Surface:98.5%PVC 1.5%PU Substrate:50%Polyester 50%Cotton	100,000	Vinyle Leather 撥水 / 防汚 ※摩耗試験 ISO5470-2
Blazer Lite	LTH	¥17,600	170	100%Virgin Wool	-	Panel
Cara	EJ	¥11,100	170	100%Polypropylene	-	Panel
Nexus	UNY	不継続	173	100%Polyester	100,000	Panel (椅子張可)
Sonus	FHR	¥13,200	170	72%Polyester 18%Polyamide 10%Viscose		Panel
	FHU	¥13,200	170	57%Polyester 43%Polyamide		Panel
Synergy 170	LDP	¥20,400	170	95%Virgin Wool 5%Polyamide	100,000	Panel (椅子張可)

※発注、サンプル依頼の際には品番（2桁または3桁のアルファベット）と色番（2桁または3桁の数字）を必ず明記下さいませようお願い致します。

※2025年1月更新

Camira fabric のご注文について

■海外取り寄せの商品です。納期は在庫がある場合、約2週間です。

ご注文の際は必ず在庫確認をお願い致します。

■ご発注、サンプル依頼の際には品番（2桁または3桁のアルファベット）と色番（2桁または3桁の数字）

を必ず明記下さいませようお願い致します。

■価格は予告なく変更する場合がございます。ご了承ください。

株式会社チェルシーインターナショナル www.chelsea-international.com

本社/ショールーム 〒160-0012 東京都新宿区南元町 4-45 TEL:03-5367-1061 FAX:03-3341-3641